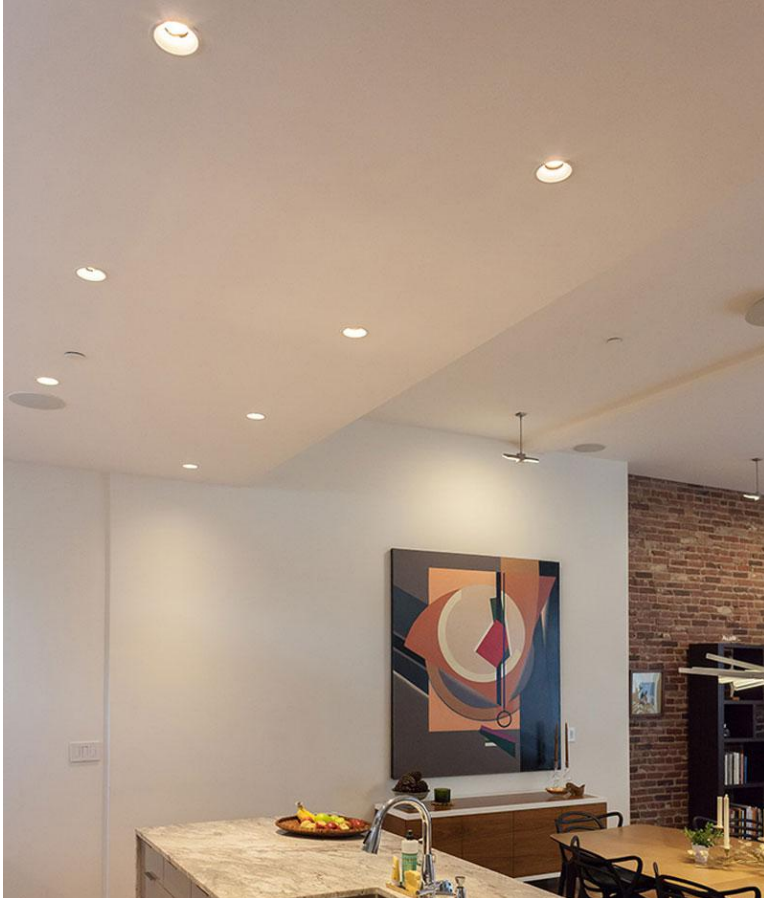


JOB NAME: _____

Date: _____

TYPE: _____

K12 Series 4" 10W Eco Baffle Retrofit Trim



PRODUCT BENEFITS

- Compatible with most dimmers down to 10%.
- Instant on.
- Easy & Fast install thanks to innovated design.
- 5 years warranty.

PRODUCT FEATURES

- CCT Options: Available in 3000K and 5000K ,2700K,3500K,4000K are available by request.
- Dim: Triac dimmable.
- Type of protection: Damp location.
- Connector box with push wire terminal for tool-free connection.
- Low profile luminaire can be installed.



JOB NAME: _____

Date: _____

TYPE: _____

PRODUCT DATASHEET

ELECTRICAL SPECIFICATIONS

Voltage:	DC 12V
Wattages:	10W
Power Factor:	≥0.90
Input Current:	100mA
THD:	≤20%

LIGHTING SPECIFICATIONS

LUMENS:	500 lm
Color:	2700K,3000K,3500K,4000K,5000K
Efficiency:	50 LPW
Ra:	≥92
R9:	≥0
SDCM:	≤6
Duv:	≤0.006
Beam Angle:	100°
Dimmable:	Triac dimmable

OPERATION AND INFORMATION

Housing:	Aluminum
Optical-Lens:	PC
Operating Temp:	-4°F ~ + 113°F
Storage Temp:	-22°F ~ + 149°F
Usage Environment:	Damp Location
Environment:	Indoor

SHIPPING

Product Net weight:	0.35lbs
Master Carton Size:	18.11" x 12.99" x17.72"
Quantity/Carton:	60pcs
Gross Weight:	21.61lbs
Pcs / Pallet:	1680pcs
Pcs / 20' GP:	25200pcs (No Pallet) / 16800pcs (Palletized)
Pcs / 40' HQ:	61800pcs (No Pallet) / 33600pcs (Palletized)

CERTIFICATES

Standard:	CE,RoHS
Warranty:	5 years



JOB NAME: _____

Date: _____

TYPE: _____

SPECIFICATIONS / ORDER INFO

SKU	Catalog Number	SIZE
LU10163-X	K12-10W-4DC-XXK-LR-WH	4"

LAMP CODE DEFINITIONS

Category	Wattage	Size	Voltage	CCT	Shape	Color
K12=Series Number	10W	4=4"	DC=12V	XXK=27K,30K,35K,40K, 50K	LR=Round	WH=White

SIZE CHART

