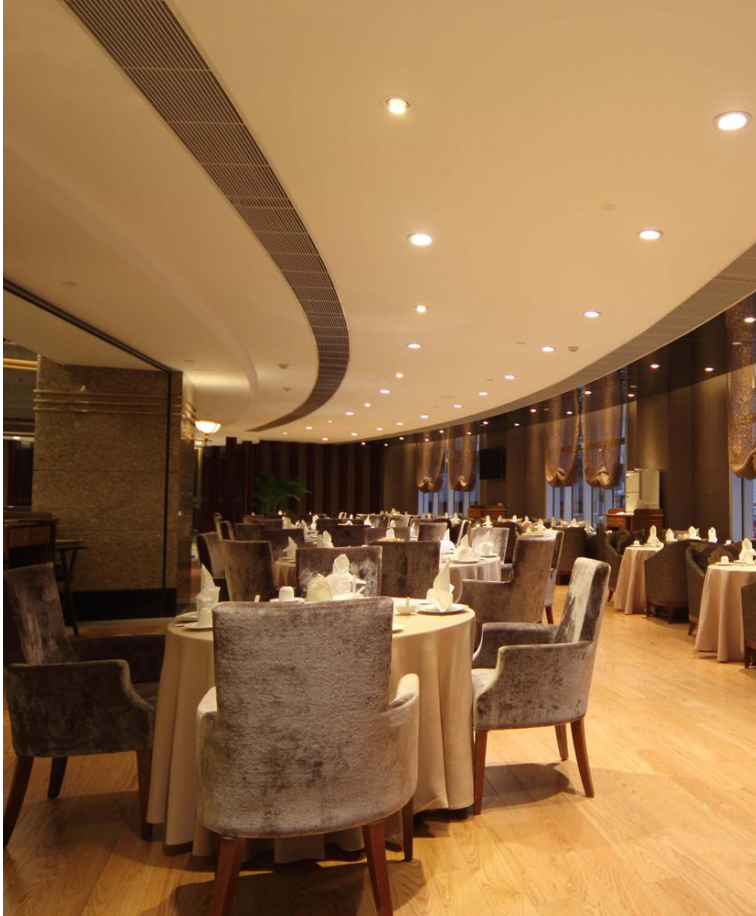


JOB NAME: \_\_\_\_\_

Date: \_\_\_\_\_

TYPE: \_\_\_\_\_

## ST10 Series 8" 30W/23W/15W Intelligent Commercial Downlight



### PRODUCT BEEFITNS

- Color Selectable Switch: 4 color option Select from the warmest of whites to the coolest of whites.
- Adjust on Field: Three wattages to choose from. Select the power and brightness with a touch of a switch.
- IC Rated: For direct wire and ceiling installation.
- MC/BX Cable: Three feet with new innovated quick connect cable that twists and locks together.

### PRODUCT FEATURES

- Easy & Fast install thanks to innovated design.
- Seperate J-box and wire for easy plug & play, connector box with push wire terminal for tool-free connection.
- CCT Selectable Options: 3000K-3500K-4000K.
- Wattage Selectable Options: 30W/23W/15W.
- 5 Years warranty.



JOB NAME: \_\_\_\_\_

Date: \_\_\_\_\_

TYPE: \_\_\_\_\_

## PRODUCT DATASHEET

### ELECTRICAL SPECIFICATIONS

<b>Voltage:</b>	AC 120-277V
<b>Frequency:</b>	50/60Hz
<b>Wattages:</b>	30W/23W/15W
<b>Power Factor:</b>	≥0.90
<b>Input Current:</b>	300mA/230mA/150mA
<b>THD:</b>	≤20%
<b>Ripple Current:</b>	≤5%
<b>Frequency of LED current:</b>	≥120Hz

### LIGHTING SPECIFICATIONS

<b>LUMENS:</b>	2400 lm/1840 lm/1200 lm
<b>Color:</b>	3000K-3500K-4000K
<b>Efficiency:</b>	80 LPW
<b>Ra:</b>	≥90
<b>R9:</b>	≥0
<b>SDCM:</b>	≤6
<b>Duv:</b>	≤0.006
<b>Beam Angle:</b>	70°
<b>Dimmable:</b>	0-10V

### OPERATION AND INFORMATION

<b>Housing:</b>	Aluminum Plate
<b>Optical-Lens:</b>	PC
<b>Operating Temp:</b>	-4°F ~ + 113°F
<b>Storage Temp:</b>	-22°F ~ + 149°F
<b>Usage Environment:</b>	Wet Location
<b>Environment:</b>	Indoor

### SHIPPING

<b>Product Net weight:</b>	2.89lbs
<b>Master Carton Size:</b>	24.02" x 12.01" x17.32"
<b>Quantity/Carton:</b>	4pcs
<b>Gross Weight:</b>	16.98lbs
<b>Pcs / Pallet:</b>	120pcs
<b>Pcs / 20' GP:</b>	1368pcs (No Pallet) / 1200pcs (Palletized)
<b>Pcs / 40' HQ:</b>	3224pcs (No Pallet) / 2400pcs (Palletized)

### CERTIFICATES

<b>Standard:</b>	UL,ES,CE,RoHS
<b>Warranty:</b>	5 years



JOB NAME: \_\_\_\_\_

Date: \_\_\_\_\_

TYPE: \_\_\_\_\_

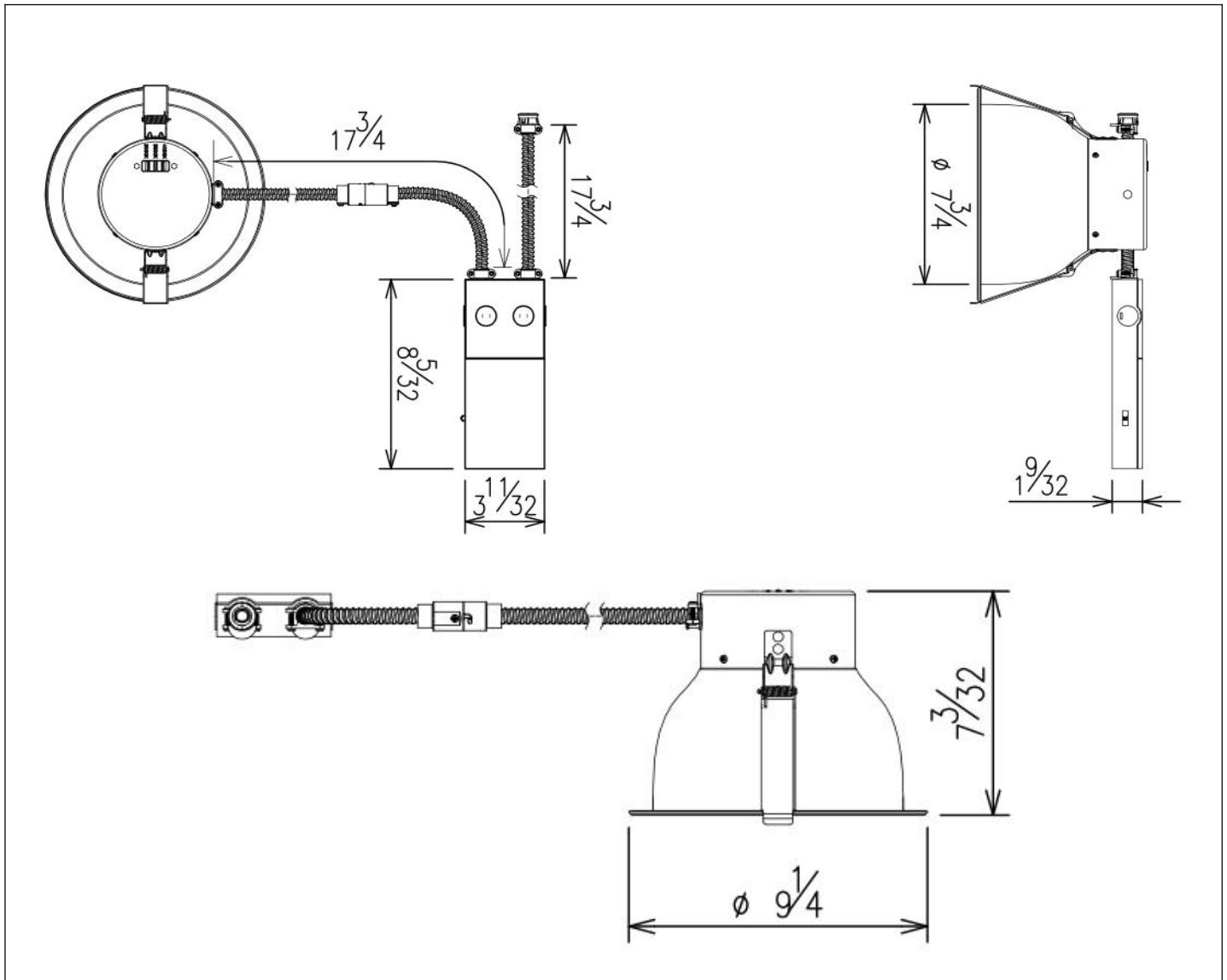
### SPECIFICATIONS / ORDER INFO

SKU	Catalog Number	SIZE
LU10136-Z	ST10-30W-8NV-ZZK-C90-1	8"

### LAMP CODE DEFINITIONS

Category	Wattage	Size	Voltage	CCT	CRI	Version
ST10=Series Number	30W/23W/15W	8=8"	NV=120-277V	ZZK=3 in 1 color	C90=90	1

### SIZE CHART





JOB NAME: \_\_\_\_\_

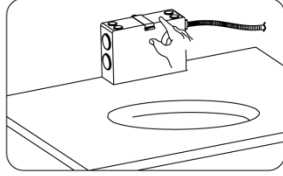
Date: \_\_\_\_\_

TYPE: \_\_\_\_\_

## INSTALLATION DIAGRAM

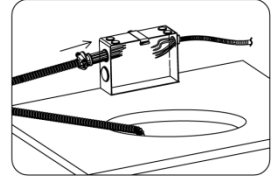
**1**

Open junction box cover plate.



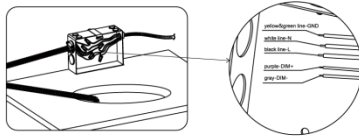
**2**

Put driver cable into junction box.



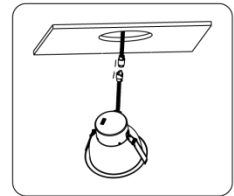
**3**

Close junction box cover plate after wires are properly connected.



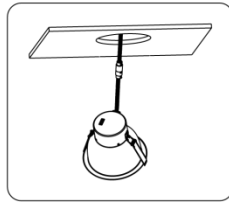
**4**

Connect the two cables together from lamp cable to driver cable.



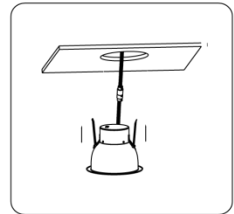
**5**

Connect wires then twist and lock the quick connector so it locks into place.



**6**

Hold springs in up right position then pass fixture through ceiling hole then release springs.



## WIRING DIAGRAM





# ENERGY STAR CERTIFIED Light Fixtures

## ALT - LED Recessed Downlight : ST10-30W-8NV-ZZK-C90-1

### Specifications

<b>ENERGY STAR Unique ID:</b>	2357833
<b>ENERGY STAR Partner:</b>	ALT
<b>Brand Name:</b>	ALT
<b>Model Name:</b>	LED Recessed Downlight
<b>Model Number:</b>	ST10-30W-8NV-ZZK-C90-1
<b>Indoor/Outdoor:</b>	Indoor
<b>Fixture Type:</b>	Downlight Recessed
<b>Technology:</b>	LED
<b>Total Light Output (lumens):</b>	2400
<b>Appearance/Correlated Color Temperature (K):</b>	4000/4100K,3000K,3500K
<b>Total Input Power (Watts):</b>	30.0
<b>Color Quality (CRI):</b>	93
<b>Energy Efficiency - Measured Outside the Fixture (lumens/Watt):</b>	80.0
<b>Power Factor:</b>	0.98
<b>Light Source Life (hrs):</b>	50000
<b>Can Size(s):</b>	8
<b>Can Rating(s):</b>	Type IC
<b>Special Features:</b>	Continuously Dimmable,Damp Location Rated,White Light Tunable
<b>Light Source Connection/Base Type:</b>	N/A
<b>Date Available On Market:</b>	2020-03-28
<b>Date Certified:</b>	2020-04-09
<b>Markets:</b>	United States, Canada
<b>ENERGY STAR Certified:</b>	Yes

### Additional Model Information

,ST10-30W-8NV  
-ZZK-C90-2,CCT  
option: 3500K/4  
000K/5000K

**UPC Codes**

Captured On:

12/21/2021