



Project Name: _____

Schedule / Date: _____

Notes: _____

ETL No.: Intertek **5014001**

DLC Family Code: **YYF0H**

Improved **Thermal Management**

Flicker Free and Anti-Glare

True **100% OFF 0-10V** Dimming

AUX PIR / DC PnP Microwave Occupancy
Controls with **Daylight Sensing**, **Customizable**
Standby and **Bi-Level** Functionality

ETL Certified for Safety

DLC 5.1 Premium Rated for Efficiency

CRI: **83** (Upgraded Color Rendering Index)

Warranty: **5 Years**



ORDERING GUIDE

SERIES	CATEGORY	SIZE	WATTAGE	CCT	SENSOR	VOLTAGE
JL	BPL Back-lit Panel	14 1x4'	ZZ Tunable	CCT Tunable	Blank None S Sensor	VL 120-277V VH 120-347V
		22 2x2'	15 15w	35 3500k		
			20 20w	40 4000k		
			25 25w	50 5000k		
			30 30w	57 5700k		
		40 40w	65 6500k			

EXAMPLE: **JL-BPL22-ZZW-CCT-S-VL**

JL	BPL Back-lit Panel	24 2x4'	ZZ Tunable	CCT Tunable	Blank None S Sensor	VL 120-277V VH 120-347V
			25 25w	35 3500k		
			30 30w	40 4000k		
			35 35w	50 5000k		
			40 40w	57 5700k		
	50 50w	65 6500k				

EXAMPLE: **JL-BPL24-ZZW-CCT-S-VL**



Project Name: _____

Schedule / Date: _____

Notes: _____

SPECIFICATIONS

SKU	53-201EM					53-203EM					53-202EM						
MODEL NO.	JL-BPL22-ZZW-CCT-S-[VL,VH]					JL-BPL14-ZZW-CCT-S-[VL,VH]					JL-BPL24-ZZW-CCT-S-[VL,VH]						
Brand	Kinlight					Kinlight					Kinlight						
Size	2' x 2'					1' x 4'					2' x 4'						
Wattage	15w	20w	25w	30w	40w	25w	30w	30w	35w	40w	50w	25w	30w	30w	35w	40w	50w
Efficacy	132.28 LPW										138.08 LPW						
Luminous Flux	2098	2800	3480	4160	5291	3526	4230	4914	5603	6904		3526	4230	4914	5603	6904	
Input @120V	131mA	175mA	219mA	263mA	350mA	219mA	263mA	307mA	350mA	438mA		219mA	263mA	307mA	350mA	438mA	
12Vdc Output	Max Current 200mA										Max Current 200mA						
Color Temp.	3500K 4000K 5000K 5700K 6500K										3500K 4000K 5000K 5700K 6500K						
Input Voltage	AC120-277V, 50/60Hz										AC120-277V, 50/60Hz						
Dimmable	0-10V (True Off)										0-10V (True Off)						
CRI	83										83						
Beam Angle (°)	110°										110°						
THD	≤20%										≤20%						
Flicker	No Flicker										No Flicker						
Power Factor	≥0.9										≥0.9						
IP Rate	IP20 - Indoor										IP20 - Indoor						
Working Temp.	-20°C ~ +55°C / -4°F ~ +131°F										-20°C ~ +55°C / -4°F ~ +131°F						
Storage Temp.	-40°C ~ +60°C / -40°F ~ +140°F										-40°C ~ +60°C / -40°F ~ +140°F						
Lifespan	50,000h										50,000h						
Pcs/Carton	1										1						
Package Dims	25.40" x 25.60" x 2.96"					49.40" x 13.78" x 2.96"					49.40" x 25.59" x 2.96"						
Weight	7.74 lbs					8.17 lbs					13.25 lbs						

DLC Number

Size Wattage	2 x 2'	1 x 4'	2 x 4'
15	S-1ND3ST	S-HZSQBW	/
20	S-UXMDVE	S-CFK25J	/
25	S-QV5WEF	S-BKHT6M	S-XDRIJ9
30	S-OKSPQG	S-JM6RF3	S-H4LPQ8
35	/	/	S-YI48U1
40	S-N5B8JO	S-SCMXWU	S-JSOTUG
50	/	/	S-YXAT3K



Project Name: _____

Schedule / Date: _____

Notes: _____

EBB SPECIFICATIONS

SKU	91-8011
Wattage	9W
Input Voltage	100-347Vac,50/60Hz
Output Voltage	150-200Vdc,250V Mac
Battery	Lithium
Recharge Duration	<24 hours
Emergency Duration	90 minutes
Power Factor	<u>0.6@100</u> Vac,0.5@347 Vac
Max input Current	800 mA max
Output Current	45-60 mA
Battery Capacity	11.1V/1800mAh
Compatible LED Lamp	Max.90W LED Back-Lit Panel
Ambient Temp	0-50°C(32°F -122°F)

EBB FETURES

UL924 listed for field or factory installation,CEC title 20 compliant

Compliance with American NFPA 101 life Safety Code

With built-in junction box.

Monthly/annual self-testing

With multi-protection function:

- Battery overcharge protection
- Battery over-discharge protection
- Output overload protection
- Short-circuit protection
- Open load protection



Project Name: _____

Schedule / Date: _____

Notes: _____

EBB SELF-TEST MODE

Operations	Indicator status	Working status
Self-test Mode	Lights OFF	Monthly testing
	Lights OFF	Annual testing
	Lights ON	Battery is charging or fully charged
Failure Mode	Lights Flashing	1. The battery pack is not connected or it is broken 2. The load is not connected 3. A short circuit may be present 4. The dimming wires are not connected properly

1. Monthly Self-Test

It will automatically perform a monthly self-test every 30 days with a duration of 30S to check whether the emergency function is normal, and automatically restore to normal charging after 30S discharged

2. Annual self-test

An annual self-test will be done every year (12 months) with a duration of more than 90mins to check whether the capacity of the battery pack is normal, and automatically restore to normal charging after fully discharged. (the condition of annual test is that the battery pack is fully charged). If the Annual inspection is interrupted, it will be retested after recovery and when the test conditions are met. (Possibility of interruption: such as sudden power failure, sudden manual test).

EMERGENCY MODE

1. The emergency battery backup enters the emergency mode immediately after the mains power failure, the lamp lights after a delay of three seconds.
2. Stop the Emergency and return to the charging state after the mains power call.

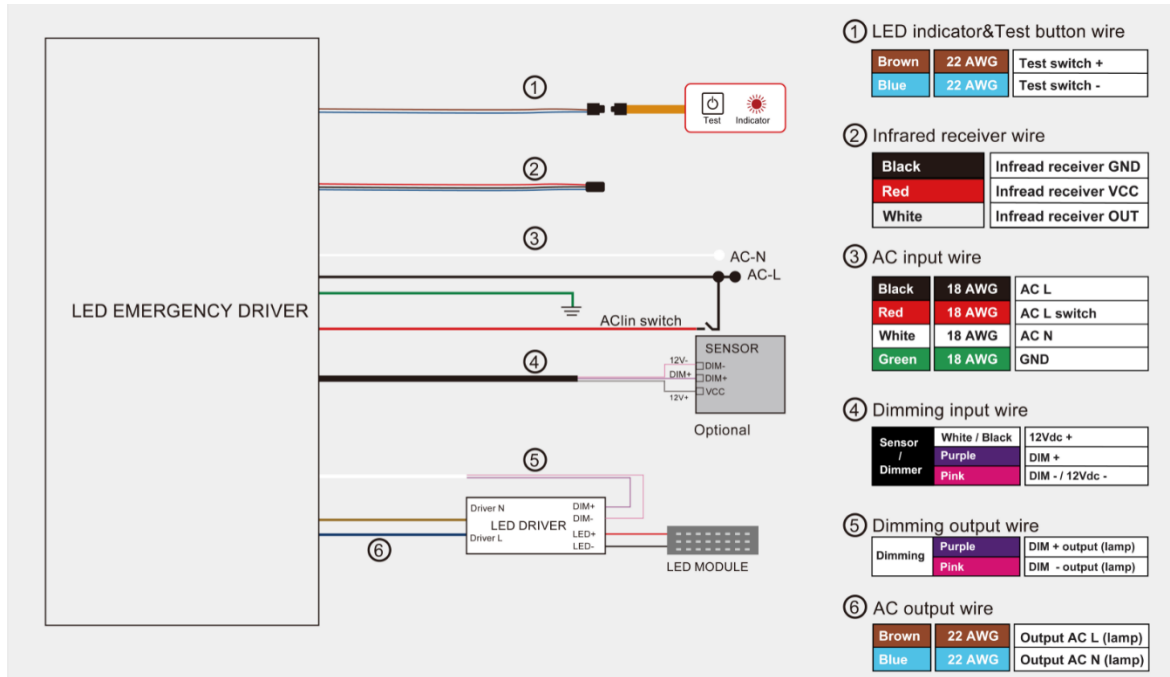
Project Name: _____

Schedule / Date: _____

Notes: _____

GENERAL WIRING DIAGRAM

With Sensor



***Sensor and dimmer cannot be used at the same time**



Project Name: _____

Schedule / Date: _____

Notes: _____

PRODUCT AND CARTON DIMENSIONS

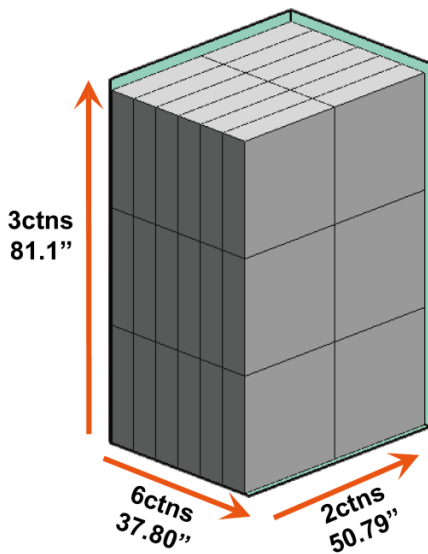
SIZE SKU	DIAGRAM	DIMENSIONS
2x4 53-202EM-XX		<p>PRODUCT 47.76" x 23.74 x 1.38" 9.36 LBS 1 Pcs</p> <p>CARTON 49.40" x 25.59" x 2.96" 13.25 LBS 1 Pcs</p>
2x2 53-201EM-XX		<p>PRODUCT 23.74" x 23.74 x 1.38" 5.95 LBS 1 Pcs</p> <p>CARTON 25.40" x 25.60" x 2.96" 7.74 LBS 1 Pcs</p>
1x4 53-203EM-XX		<p>PRODUCT 47.76" x 11.93 x 1.38" 6.37 LBS 1 Pcs</p> <p>CARTON 48.82" x 13.78" x 5.91" 8.17 LBS 1 Pcs</p>

PALLET & CONTAINER LOADING

SIZE SKU	WEIGHT	LENGTH	WIDTH	HEIGHT	40' HQ LOADING QTY.
2x2 53-201EM	643.68 LBS	50.79"	37.80"	81.10"	2160pcs
2x4 53-202EM	606.42 LBS	49.61"	37.80"	81.10"	1110pcs
1x4 53-203EM	648.32 LBS	49.61"	37.80"	78.60"	1044pcs

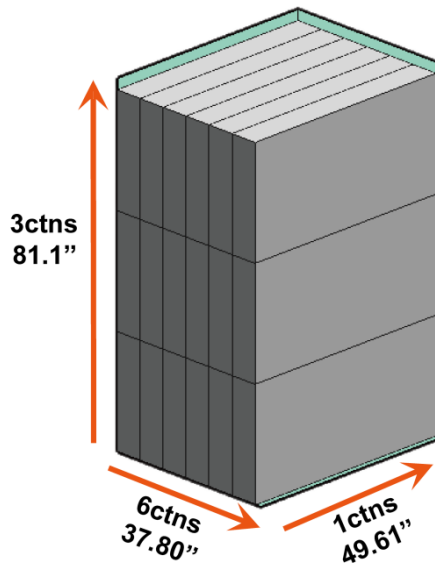
2' x 2'

144ctns/144pcs



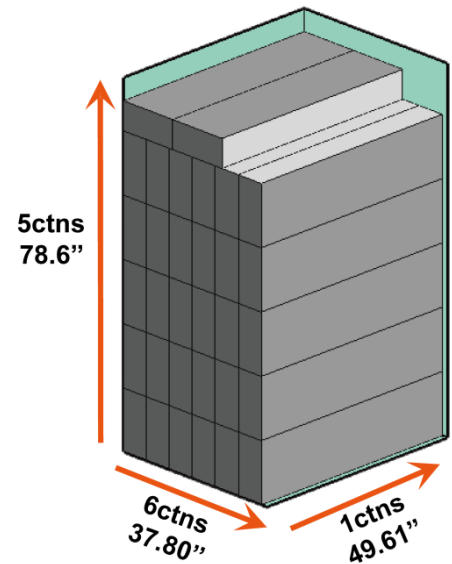
2' x 4'

72ctns/72pcs



1' x 4'

128ctns/128pcs







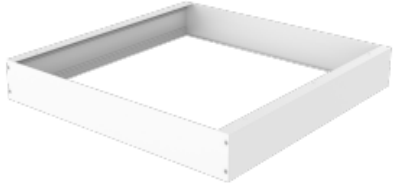


The above simulation diagram does not calculate the height and weight of the pallet, and the size and weight information will be slightly different from the actual situation.

Project Name: _____

Schedule / Date: _____

Notes: _____

ACCESSORIES

SKU	DESCRIPTION	ITEM
39-2012S	AUX Sensor Daylight Bi-Level Standby	
78-20177-A	DC PnP Sensor Daylight Bi-Level Standby	
78-20178-A	Remote with display	
53-2089A	Hanging Cable Kit	
53-2091A	2x4' Surface Mount Kit	
53-2090A	2x2' Surface Mount Kit	
53-2092A	1x4' Surface Mount Kit	
53-2093A	Junction Box	
53-2094F	2x4' Flange kIT	
53-2093F	2x2' Flange kIT	
53-2095F	1x4' Flange kIT	

INSTALLATION INSTRUCTIONS

Safety Instruction:

Basic safety precautions should always be followed when installing, including the following:

1. Read instructions carefully before installing.
2. This LED Panel requires professional installation and maintenance.
3. The power supply of the LED Panel should be powered by a dedicated external LED driver.
4. Disconnect the power supply before installing or maintenance.
5. Make sure the wires have been properly connected before powering on the device.
6. Ensure the product has enough space for heat dissipation.
7. Ensure the luminaries are never covered by any heat insulation mat or slim layer material at anytime.
8. Suitable for damp locations.
9. Ambient Temperature: -20°C to + 45°C, Avoid direct sunlight.
10. Storage Conditions: Cool & dry conditions.
11. If you have any questions about our products, please contact us! Do not disassemble, repair or modify the product without permission!

Installation Procedure

WARNING:

1. Switch off before installation.
2. Switch on only after complete installation and examination of the circuit.



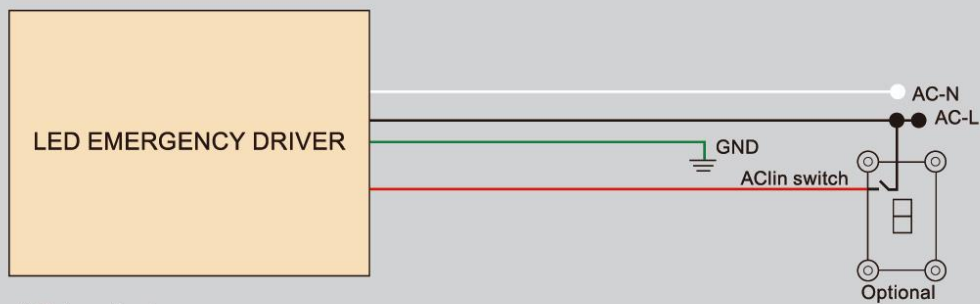
Turn Off
Power Supply

CAUTION:

Make sure that the mounting surface or structural member used for installation can support the weight of LED Panel.

Wiring Diagram

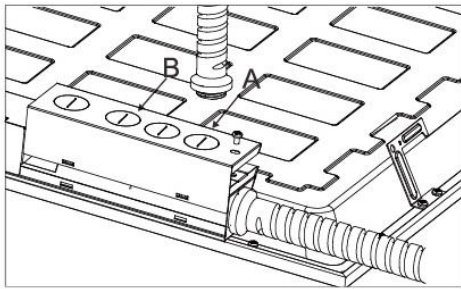
Figure 1



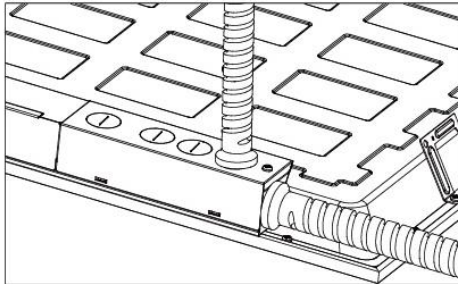
AC input wire

Wire color	
18AWG/Black	AC line (24/7)
18AWG/Red	AC line switch
18AWG/White	Neutra
18AWG/Green	GND

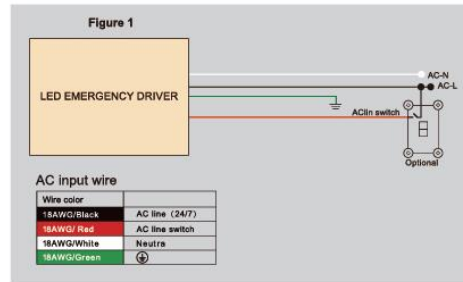
Warning: Sensor and dimmer cannot be used at the same time!



(1) Remove the knock-down hole on box by screwdriver (Part A), Remove screw and take out the driver cover (Part B)

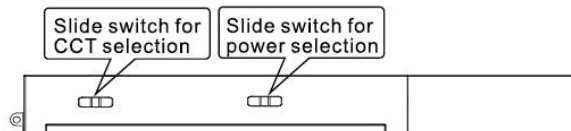


(3) Cover the driver box and tighten it with a screwdriver, finish connection.

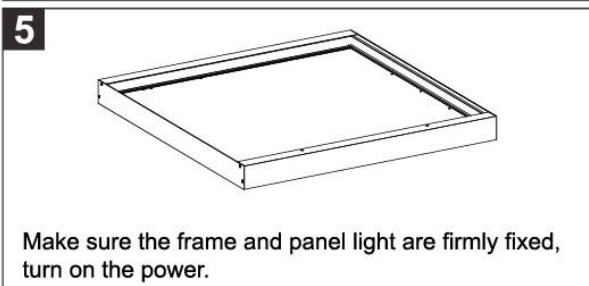
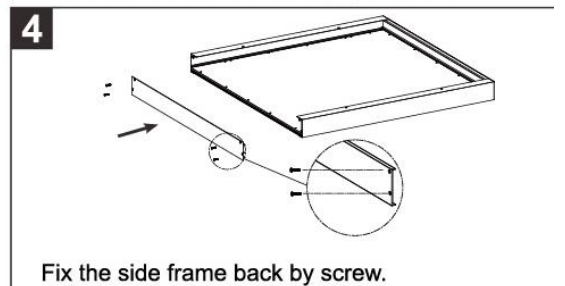
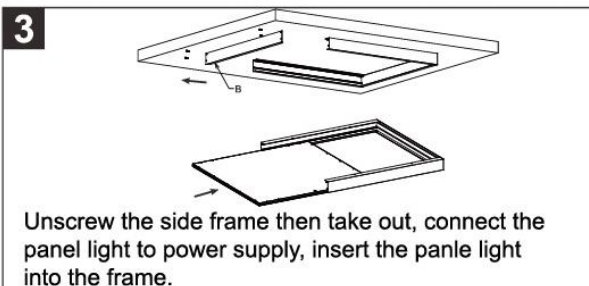
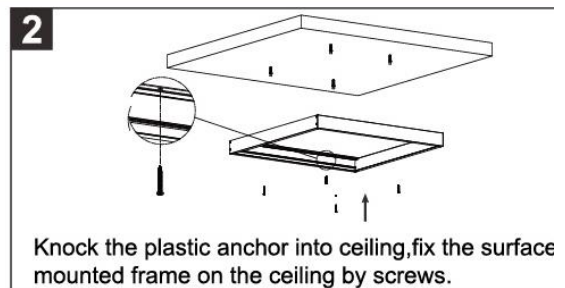
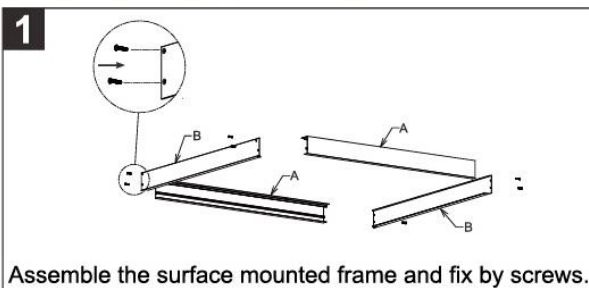


(2) Connector the wires as Figure 1.

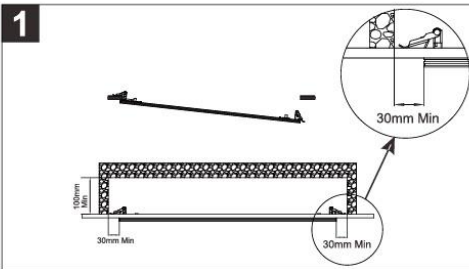
For the product with Slide Switch of CCT or power select please select the CCT or power needed before installati (Ignore these steps if without the function)



Surface mounted



Recessed Mounting(Clips)

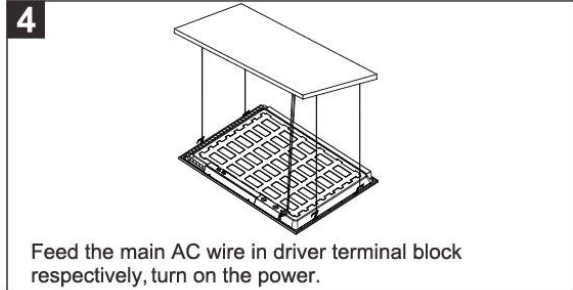
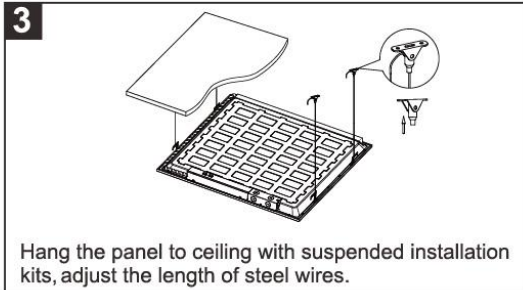
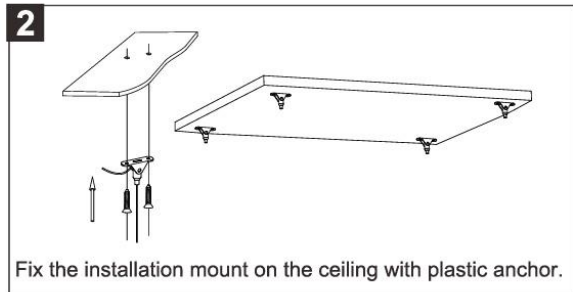
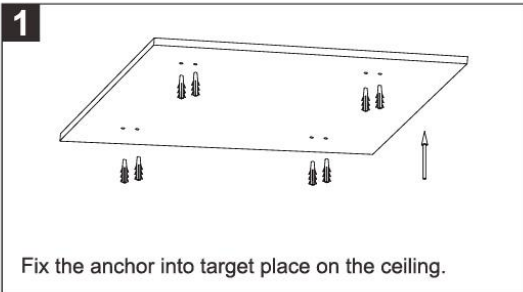


2

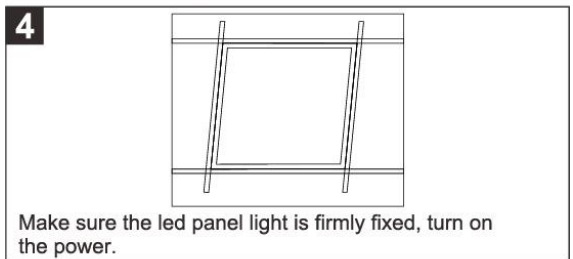
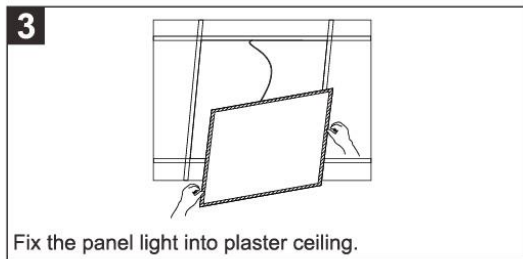
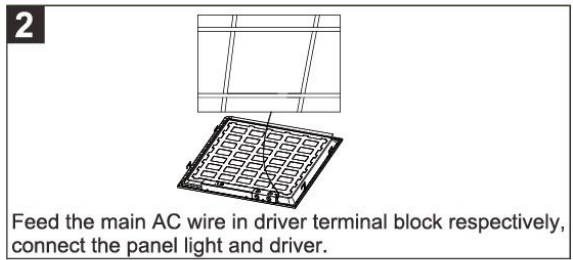
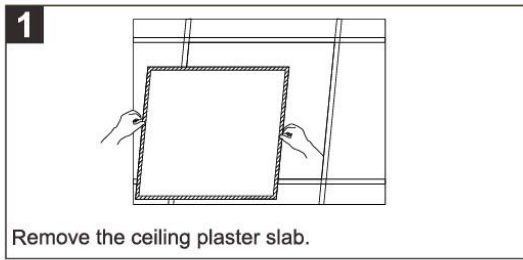
Cut Out Sizes		
Type	A(mm)	B(mm)
PL2X2	578	578
PL1X4	1188	278
PL2X4	1188	578

Clips can be purchased separately as an accessory.

Suspended

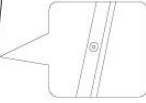
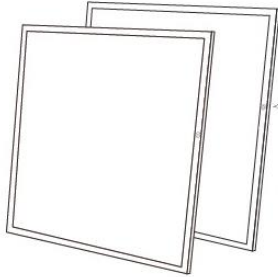


Recessed:



Warning:
 Input wire diameter $\geq 0.75\text{mm}^2$;
 Product modification and improper installation are not valid for warranty!

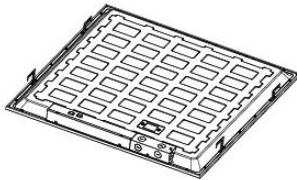
Audio jack PIR sensor



Audio Jack DC Sensor base.
PIR sensor purchased separately.

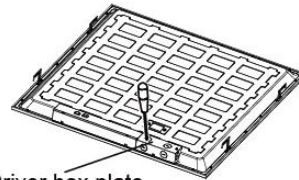
Built-in motion sensor

1



The cover plate on the back is reserved for the back wiring installation of DC sensor.

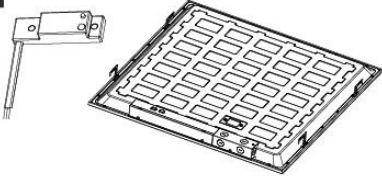
2



Driver box plate

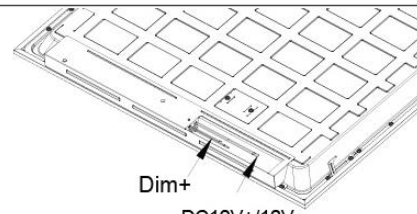
If the user needs to install the sensor, the sensor cover and driver box plate should be removed first.

3



Before installing the sensor, connect the terminal wire of the sensor with the terminal wire of driver output. Then aim the sensor at the hole of the sensor and put it on the back plate.

4



Dim+
DC12V+/12V-

Sensor Dim+(purple)
Sensor Dim-(yellow)
Sensor DC12V+(red)