

# T8 LINEAR INTEGRATE

Plastic / Aluminum Material

**BUILDERS PACK**  
EASY INSTALLATION

## Seamless Linking | Frosted Cover

### DESCRIPTION

LED Integrated Low Bay & High Bay | Linkable |  
50pcs/ctn

Size & Three(3) Wattage Field Tunable	22w-30w-40w
Five(5) CCT Field Tunable	3500K-4000K-5000K-5700K-6500K
CRI	82
Beam angle	120°
Warranty	5 years



### PRODUCT FEATURES

- AC 120-277V
- Three(3) Wattage & Five(5) CCT tunable
- Seamless linking
- Frosted cover
- 50,000+ hour lifetime
- Operating temperature -4°F to +113°F
- ETL Listed
- DLC 5.1 Premium Listed



### LAMP CODE DEFINITIONS

JL-INT-XFT-ZZW-XXK

JL	INT	XFT	ZZW	XXK
Series	Integrate	Length	Wattage	Color Temperature



**Seamless Linking | Frosted Cover****SPECIFICATIONS**

Size	4FT
SKU	53-2603F
Model No.	JL-INT-4FT-22W-XXK JL-INT-4FT-30W-XXK JL-INT-4FT-40W-XXK
3 Wattage Field Tunable	22W-30W-40W 22W No DLC
Efficacy	150.4LPW
Luminous Flux	22w 3300lm 30w 4782lm 40w 5928lm
Input Current @120V	22w 193mA 30w 263mA 40w 351mA
Color Temperature	3500K / 4000K / 5000K / 5700K / 6500K
Input Voltage	AC120-277V, 50/60Hz
THD	≤20%
Flicker	Flicker
Power Factor	≥0.90
Cover	Frosted
IP Rate	IP20
Working Temperature	-20°C ~ +55°C / -4°F ~ +131°F
Storage Temperature	-40°C ~ +60°C / -40°F ~ +140°F
Lifespan	50,000h

## Seamless Linking | Frosted Cover

### BRIEF INTRODUCTION



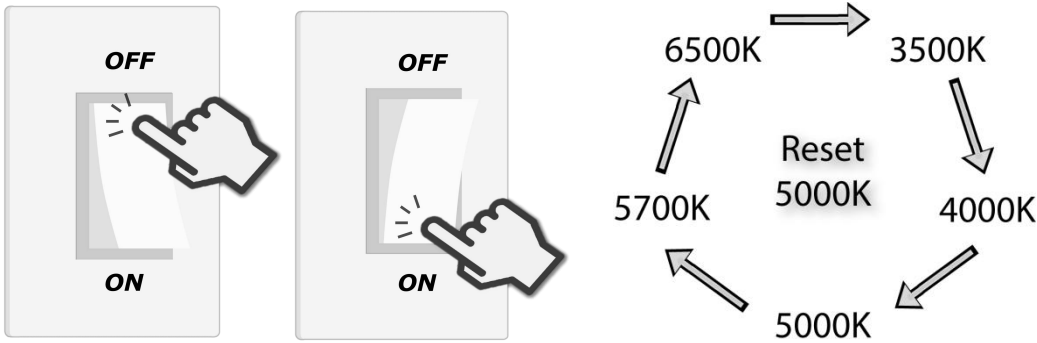
Wattage Tunable



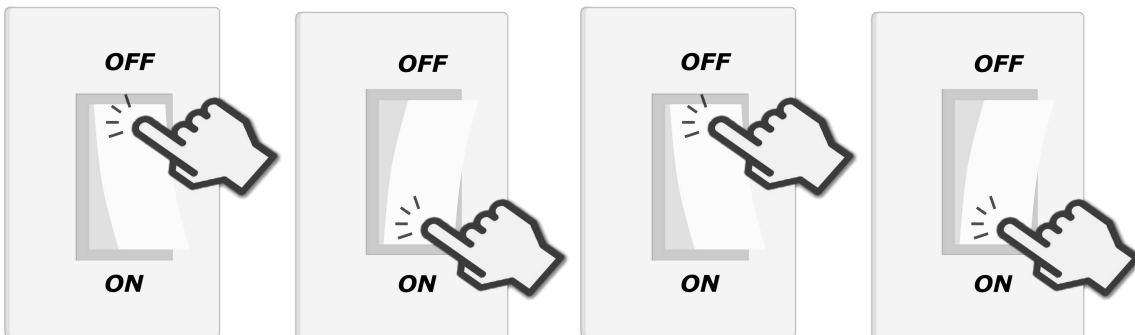
CCT Tunable

### WALL SWITCH (in this gear)

-Control CCT: Switch off & on once quickly, the CCT will change in sequence.



-Reset: Switch off & on twice quickly, the CCT will reset to 5000K.



-Memory: Fixture will remember the CCT after lighting 10 seconds.

## Seamless Linking | Frosted Cover

### INSTALLATION OF LINKING

Max of 600W for linking applications at 120V, Max of 1200W for linking applications at 277V

Size	Wattage	Linkable Qty @120V PCS	Linkable Qty @277V PCS
8FT	72W	8	16
	60W	10	20
	45W	13	26
4FT	40W	15	30
	30W	20	40
	22W	27	54
3FT	30W	20	40
	22W	27	54
	15W	40	80
2FT	20W	30	60
	15W	40	80
	10W	60	120

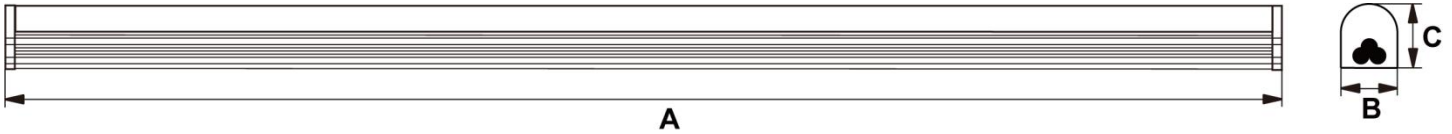
When you need Integrate Linking in different sizes, please refer to below sheets to ensure the brightness of the maximum approximation

8FT	4FT	3FT	2FT
72W	40W	30W	20W
60W	30W	22W	15W
45W	22W	15W	10W



### Seamless Linking | Frosted Cover

**PHYSICAL CHARACTERISTICS**



Product Size	A (Body Length)	B (Width)	C (Height)
2FT	22.52"	1.18"	1.42"
3FT	34.33"	1.18"	1.42"
4FT	45"	1.18"	1.42"
8FT	90"	1.18"	1.42"

**ACCESSORIES (purchased separately)**

**-Mounting Accessory**

		
6ft On/Off Cable SKU# 53-26W	Magnet Clips SKU# 53-26M	Mounting Clips SKU# 53-263

		
Single-end Cable SKU# 53-264	Double-end Cable SKU# 53-265	Butt Connector SKU# 53-266

# T8 LINEAR INTEGRATE

Plastic / Aluminum Material

**BUILDERS PACK**  
EASY INSTALLATION

## Seamless Linking | Frosted Cover

### -480V to 277V Step-Down Non-Isolated Auto-Transformers



Builderspack's 480V to 277V Step-Down Auto-Transformers are designed to step down 480V to 277V single-phase power.

These transformers enable consumers to utilize common universal voltage (120-277V) LED fixture in applications where the main facility power is 480V.

SKU# 91-8015

### PAGKAGE

SKU	Size	Length	Width	Height	Pcs / Carton	Net Weight	Gross Weight
53-2603F	4FT	46.46"	15.16"	9.25"	50 pcs	0.75lbs	45.99lbs

### PALLET & CONTAINER LOADING

SKU	Size	Length	Width	Height	Gross Weight	40' HQ Loading Qty
53-2603F	4FT	48"	40.55"	78.74"	893.81lbs	30,000pcs

