



LED CANOPY LIGHT

40/75W
CP03A

SUPERTEK
SMARTLED



QUICK FACTS

1. ETL, DLC5.1 Premium listed
2. 120-277Vac/120-347Vac optional
3. High efficacy up to 140LM/W, low glare lens design
4. CCT and wattage tunable available
5. Microwave motion, photocell sensor / Emergency battery backup optional
6. Unique design, strong extruded lamp body
7. Lifespan: >50,000Hrs
8. 5 years warranty



SPECIFICATIONS

NOTE MARK	MODEL	WATT	EFFICACY	LUMENS	REPLACE HID	AVAILABLE CCT
Multiple Wattage Multiple CCT	CP03A-40MW-50KMC-LV	40/35/30/25W Tunable	140 LPW	5,600/4,900/4,200/ 3,500 LM	100-150W	3000/4000/5000K Tunable
	CP03A-40MW-50KMC-MV	40/35/30/25W Tunable	140 LPW	5,600/4,900/4,200/ 3,500 LM	100-150W	3000/4000/5000K Tunable
	CP03A-75MW-50KMC-LV	75/60/50/40W Tunable	140 LPW	10,500/8,400/7,000/ 5,600 LM	175-250W	3000/4000/5000K Tunable
	CP03A-75MW-50KMC-MV	75/60/50/40W Tunable	140 LPW	10,500/8,400/7,000/ 5,600 LM	175-250W	3000/4000/5000K Tunable

Note: LV=120-277V / MV=120-347V / MW=Multiple Wattage / MC=Multiple CCT

Electrical Data

Input Voltage	120-277/120-347Vac
Power Factor	0.90
Power Frequency	50/60Hz
Power Efficiency	>90%
Total Harmonic Distortion	<15%
Dimming	0-10V
Driver	Kerham
Surge Protection	L-N: 4KV, L/N-PE: 6KV

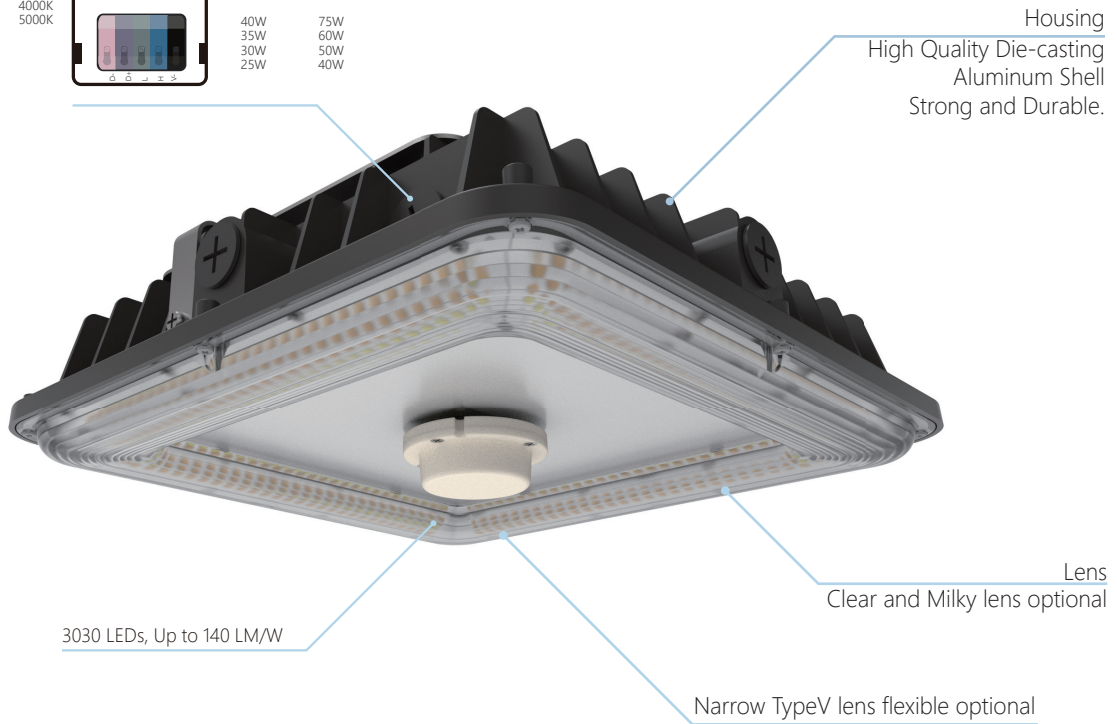
Optical Data

Efficiency	140 LM/W
LED	3030
CCT	3000 / 4000 / 5000K
CRI	>70
Beam Angle	140°
Additional function	CCT & Wattage Tunable; 8W EMBB; Pluggable Microwave Motion Sensor

Others

IP Rating	IP65
Life Time	>50,000Hrs (Ta=30°C@L80)
Warranty	5 Years
IK Degree	08
Housing	Die-cast Aluminum
Operating Temperature	-40°F to 104°F (-40°C to +40°C)
Certificates	ETL/DLC 5.1 Premium
Finish	Black/Bronze/White Customized (Optional)

SPECIFICATION FEATURES



Mounting Plate
Suitable for J-BOX mounting, and easy for installation, also support pendant mounting, wires coming out from the back for easier wire connections.



Up to 8W Emergency Battery Back Up

Accessories

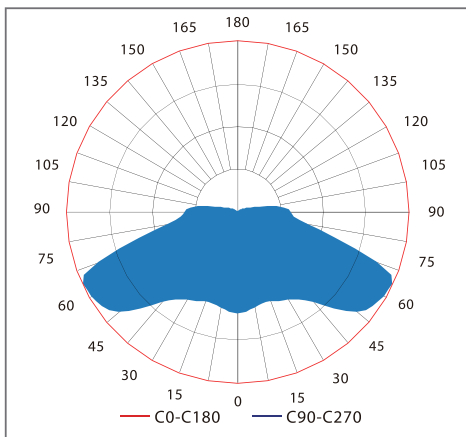


Surge Protection

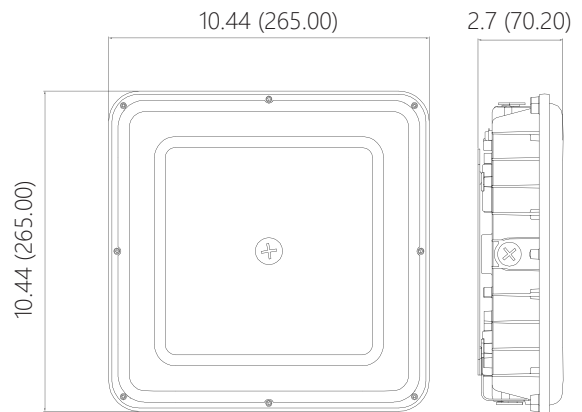


Multiple Pluggable Microwave Motion Sensor Optional (Z10, Zhaga, AUX etc)

PHOTOMETRIC DIAGRAMS



DIMENSIONS INCH (MM)



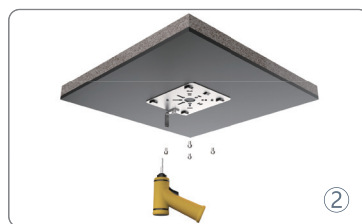
PARKING INFORMATION

MODEL	INNER CARTON (MM & INCH)	MASTER CARTON (MM & INCH)	PCS CTN	NET WEIGHT (KGS & LBS)	GROSS WEIGHT (KGS & LBS)	20GP PCS	40HQ PCS	45HQ PCS
CP03A-40	275*285*81 10.83*11.22*3.19	330*300*290 12.99*11.81*11.42	4	10.2 / 22.49	12 / 26.46	2,994	7,271	9,195
CP03A-75	275*285*81 10.83*11.22*3.19	330*300*290 12.99*11.81*11.42	4	10.2 / 22.49	12 / 26.46	2,646	6,425	8,125

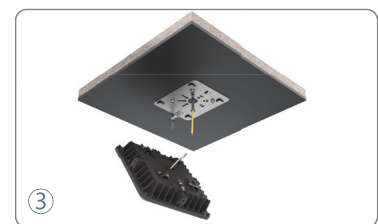
INSTALLATION METHODS



Loosen and remove the screws which used to fix the mounting plate.



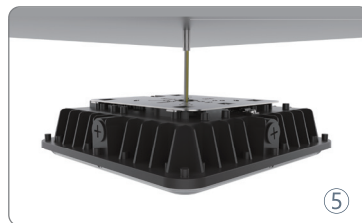
Fix the mounting plate to the ceiling with the screws.



1. Connect the line voltage to the wires coming out from the fixture following the wiring diagram.
2. Push the pressing plate into the suspension loop on the mounting plate.



Lock screws to complete the installation.



1. Connect the line voltage to the wires coming out from the fixture.
2. Screw the fixture to the 3/4 inch conduit to complete the installation.