



LED AREA LIGHT

75/100/150/185/200/240/320W
AL21A/AL22A

SUPERTEK
SMARTLED



QUICK FACTS

1. ETL, DLC5.1 Premium listed
2. 120-277Vac/120-347Vac/347-480Vac optional
3. High efficacy up to 170 LM/W
4. CCT and wattage tunable available
5. Microwave motion, photocell sensor / Emergency battery backup optional
6. Unique design, strong extruded lamp body
7. Lifespan: >50,000Hrs
8. 5 years warranty



AL21A

AL22A

SPECIFICATIONS

NOTE MARK	MODEL	WATT	EFFICACY (5000K)	LUMENS (5000K)	REPLACE HID	AVAILABLE CCT
Multiple Wattage Multiple CCT	AL21A-150MW-50KMC-LV	75W-100W-120W-150W Tunable	155 LPW	23,250LM	400-750W	3000/4000/5000K Tunable
	AL22A-320MW-50KMC-LV	160W-200W-240W-320W Tunable	155 LPW	49,600LM	750-1000W	3000/4000/5000K Tunable
	AL21A-150MW-50KMC-HV	75W-100W-120W-150W Tunable	155 LPW	23,250LM	400-750W	3000/4000/5000K Tunable
	AL22A-320MW-50KMC-HV	160W-200W-240W-320W Tunable	155 LPW	49,600LM	750-1000W	3000/4000/5000K Tunable
Multiple Wattage Single CCT	AL21A-150MW-30K/40K/50K-LV	75W-100W-120W-150W Tunable	155 LPW	23,250LM	400-750W	3000/4000/5000K
	AL21A-200MW-30K/40K/50K-LV	100W-120W-150W-200W Tunable	155 LPW	31,000 LM	400-750W	3000/4000/5000K
	AL22A-320MW-30K/40K/50K-LV	160W-200W-240W-320W Tunable	155 LPW	49,600LM	750-1000W	3000/4000/5000K
	AL21A-150MW-30K/40K/50K-HV	75W-100W-120W-150W Tunable	155 LPW	23,250LM	400-750W	3000/4000/5000K
	AL22A-320MW-30K/40K/50K-HV	160W-200W-240W-320W Tunable	155 LPW	49,600LM	750-1000W	3000/4000/5000K
Multiple Wattage Multiple CCT	AL21A-100MW-50KMC-MV	40W-60W-80W-100W Tunable	160 LPW	16,000LM	250-400W	3000/4000/5000K Tunable
	AL21A-150MW-50KMC-MV	100W-120W-135W-150W Tunable	160 LPW	24,000LM	400-750W	3000/4000/5000K Tunable
	AL21A-240MW-50KMC-MV	180W-200W-220W-240W Tunable	160 LPW	38,400LM	750-1000W	3000/4000/5000K Tunable
	AL22A-320MW-50KMC-MV	240W-280W-300W-320W Tunable	160 LPW	51,200LM	750-1000W	3000/4000/5000K Tunable

Note: LV=120-277V / MV=120-347V / HV=347-480V / MW=Multiple Wattage / MC=Multiple CCT

Electrical Data

Input Voltage	120-277/120-347/347-480Vac
Power Factor	0.90
Power Frequency	50/60Hz
Power Efficiency	>90%
Total Harmonic Distortion	<15%
Dimming	0-10V
Driver	Kerham
Surge Protection	L-N: 4KV, L/N-PE: 6KV

Optical Data

Efficiency	160 LM/W
LED	3030
CCT	3000K / 4000K / 5000K
CRI	>70
Beam Angle	T2/T3/T4/T5
Additional function	CCT & Wattage Tunable; 8W EMBB; Pluggable Microwave Motion Sensor

Others

IP Rating	IP65
Life Time	>50,000Hrs (Ta=30°C@L80)
Warranty	5 Years
IK Degree	08
Housing	Die-cast Aluminum
Operating Temperature	-40°F to 104°F (-40°C to +40°C)
Certificates	ETL/DLC 5.1 Premium
Finish	Black/Bronze/White Customized (Optional)

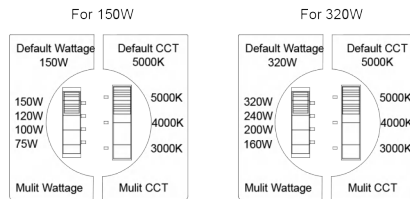
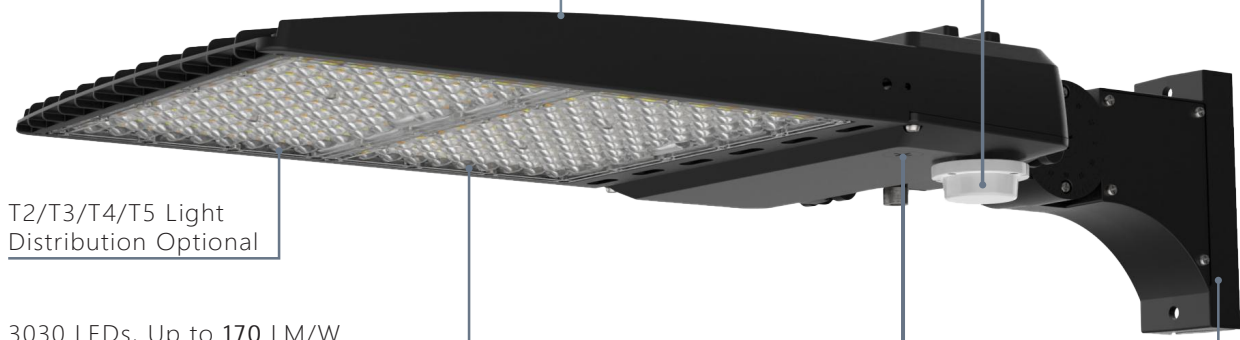
SPECIFICATION FEATURES

Sensor
Multiple Pluggable Microwave Motion
Sensor Optional (Z10, Zhaga, AUX etc)

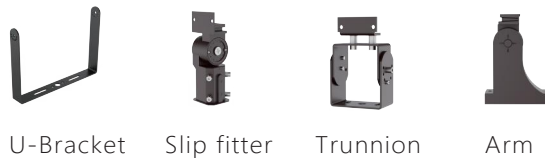
Stronger Housing with Good Heat Dissipation

T2/T3/T4/T5 Light
Distribution Optional

3030 LEDs, Up to 170 LM/W



4 Kinds of Mounting



ACCESSORIES



Surge Protection



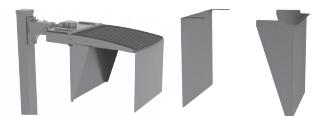
Photocell



Shorting Cap



Receptacle of
Photocell/Shorting
Cap



Shield
Customized Support

ARM INSTALLATION METHODS



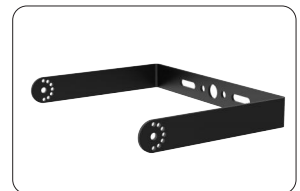
Trunnion Mount



Pole Mount

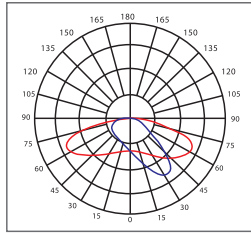


Slip fitter Mount

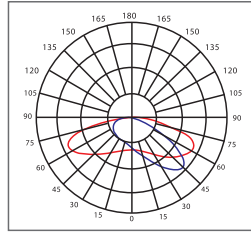


U-Bracker Mount

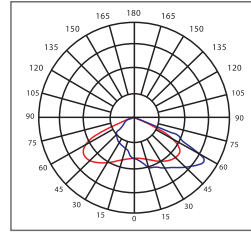
PHOTOMETRIC DIAGRAMS



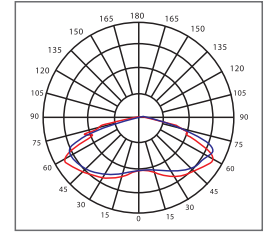
— C0-C180 — C90-C270
TYPE II



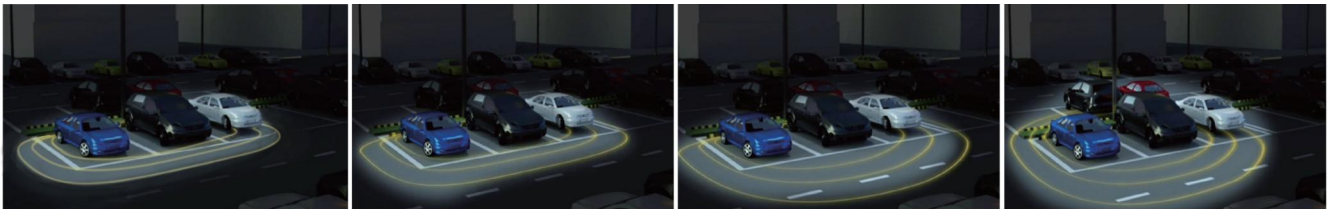
— C0-C180 — C90-C270
TYPE III



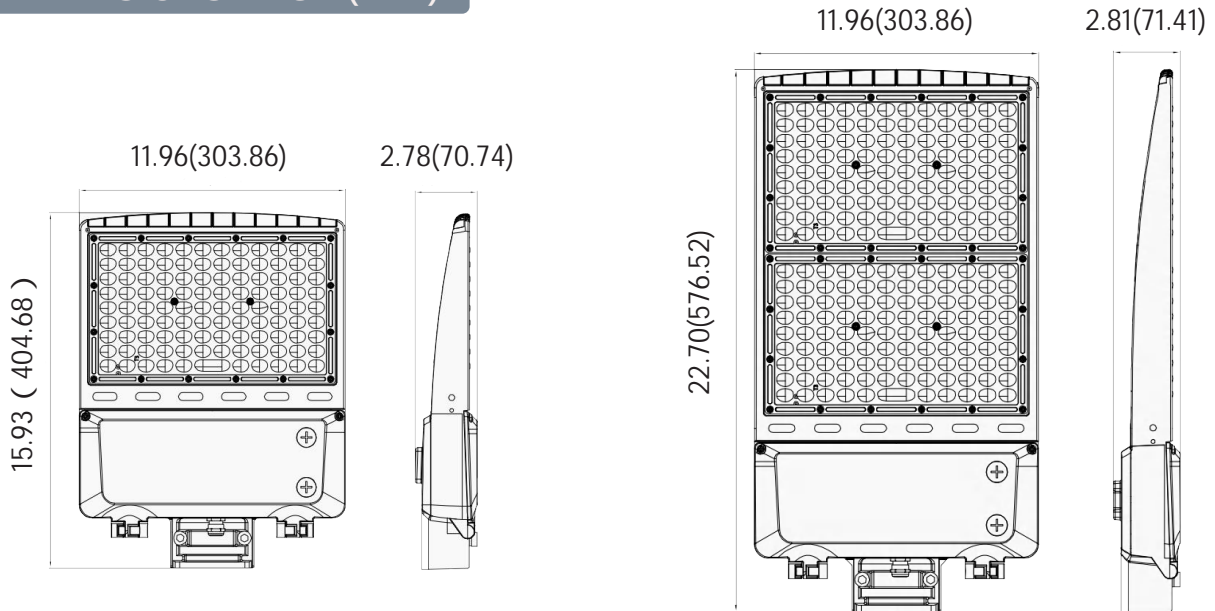
— C0-C180 — C90-C270
TYPE IV



— C0-C180 — C90-C270
TYPE V



DIMENSIONS INCH (MM)



PARKING INFORMATION

MODEL	MASTER CARTON (MM & INCH) L*W*H	PCS CTN	NET WEIGHT (KGS & LBS)	GROSS WEIGHT (KGS & LBS)	20GP PCS	40HQ PCS	45HQ PCS
AL21A-200MW-50K-LV	425*325*110mm	1	3.25 / 7.15	4.0 / 8.8	1,908	4,475	5,660
AL21A-150MW-50K-LV	425*325*110mm	1	3.15 / 6.93	3.85 / 8.47	1,908	4,475	5,660
AL22A-320MW-50K-LV	600*325*110mm	1	4.8 / 10.56	5.6 / 12.32	1,351	3,170	4,009